

The Ellesmere Port C of E College



Attendance and Punctuality Policy

Policy Information:

Date prepared Adopted by

Governors

Implementation Date

Frequency of Review

Review Date

Autumn 2025

Autumn 2025

Immediate Annually

Autumn 2026

Approved by Principal:

Approved by Chair of Governors:

Cath Green

Gordon McGuinness



Frank Field
Education Trust

Our Vision

To act justly, to love with mercy and to walk humbly with our God - Micah 6:8

At Ellesmere Port Church of England College, we seek to build a community of faith where our students have the cultural capital to follow unlimited ideas and dreams. Above all else, we want our students to experience the fullness of life, where the sort of person they become is of paramount importance.

To **BE MORE** is to be a community which aspires to act justly in all situations; to be kind towards those inside and outside the College; and to be open to God's guidance in all areas of our lives.

This is a statement of policy for The Ellesmere Port Church of England College. It provides guidelines for the standards of behaviour and moral virtues expected in The College and for the procedures adopted by The College and its governors when pupils behave in a manner which makes us proud, and for the times when they may fall short of our standards.

Introduction

This is a statement of policy for The Ellesmere Port Church of England College. It provides guidelines for the standards of attendance, punctuality and display of the moral virtues expected in the College and for the procedures adopted by the College and its governors when pupils fall short of these expected standards. This policy attempts to ensure that all behaviour is consistent with the College's Mission Statement "To act justly, to love with mercy and to walk humbly with our God" Micah 6:8 and our Trust motto "Aspire not to have more but to be more".

We are dedicated to ensuring that our College environment supports learning and the wellbeing of pupils and staff through a strong sense of Christian community cohesion. Courage, justice, honesty, compassion, gratitude, humility, integrity and respect are the moral virtues within our Christian community, and we work hard to provide a safe College where pupils feel included in every aspect of College life and comfortable to voice their opinions.

Links with other policies

This Policy has obvious links with the wider safeguarding agenda and specifically all policies that make up the safeguarding suite of documents. It should be read in conjunction with the Safeguarding Policy. When ratifying or reviewing the policy, links should be made with the other relevant policies.

This policy outlines what we expect from all our pupils in terms of their attendance and punctuality, and the sanctions that will be enforced if this policy is not adhered to. Good attendance and self-discipline are vital for pupils to carry with them both during and after their College years.

Principles

We believe our Attendance and punctuality policy is underpinned by our Moral Virtues within our Christian context:

Justice - "Grant justice and do what is fair" Colossians 4:1

Definition: *Our College rules are fair and reasonable.*

Example: *Showing that you know when you need to stand up for what is correct and appropriate with the context of our moral virtues and Consistency Across the College.*

Humility - "Humble yourselves in the sight of the Lord" James 4:10

Definition: we aim to ensure that everyone in our community has a place and a voice that will be heard.

Example: To celebrate all our achievements in a respectful manner.

Respect - “Do to others as you would have them do to you” Luke 6:31

Definition: treat others how you would wish to be treated yourself.

Example: Holding the door open for any member of our community.

Courage - “Be strong and courageous. Do not be afraid” Joshua 1:9

Definition: the quality of having strength in the face of difficulty.

Example: Being confident to express opinions and ideas within the College.

Integrity - “The godly walk with integrity” Proverbs 20:7

Definition: the quality of having strong moral virtues.

Example: Knowing that we should all try and do the right thing when faced with adversity.

Compassion - “Clothe yourselves with compassion” Colossians 3:12

Definition: the quality of having concern for others.

Example: Showing kindness and care for others within the College and our community.

Honesty - “He delights in those that tell the truth” Proverbs 12:22

Definition: the quality of being truthful.

Example: Telling the truth in all situations even when it is hard to do so.

Gratitude - “Give thanks to the Lord, for he is good: his love endures forever” Psalm 107:2

Definition: the quality of being thankful and showing appreciation.

Example: Saying please and thank you wherever possible.

Attendance and Punctuality Policy Contents

Introduction	5
Legislation and Guidance	5
Principles of the Attendance and Punctuality Policy	7
Daily Registers	8
Clubs at lunchtime	9
Trips	9
Rehearsals/Music lessons	9
Absence / Lateness	9
Absence from College	10
Early Identification and Intervention: assess, plan, do and review	11
Absence Codes	11
School attendance, safeguarding and children missing education	12
Notifying the Local Authority	13
Reluctance to attend school	13
Leave of absence in term time	13
Persistent Absence	14
What happens next?	14
Unauthorised Absence and Fixed Penalty Notice	15
Application for Exceptional Circumstances	15
Punctuality	17
Late Procedures	17
ROLES AND RESPONSIBILITIES	17
Communication with parents	18
Rewards and incentives	18
Attendance Additional Intervention Meeting (AIM)	18
Appendix 1 – SIMS Lesson Monitor – User Guide	19
Appendix 2 – Sample stage 1 letter	21
Appendix 3 – Sample stage 2 letter	22
Appendix 4 – Sample Attendance Action Plan letter	23
Appendix 5 – Sample Medical Evidence letter	24
Appendix 6 – Sample stage 3 letter	25
Appendix 7 – Sample Final Warning letter	26
Appendix 8 – Sample flyer to parents	27
Appendix 9 – Sample Stage Action Plan	28
Appendix 10 – Staged Approach	29
Appendix 11 – Absence Codes	30
Appendix 12 – Code of Conduct for Education Fixed Penalty Notice (Unauthorised Leave of Absence & Irregular Attendance)	31
Appendix 13 – Local Authority Guidance for schools – Attendance case working. (School only)	32
Links to other school policies	34

Introduction

This is a statement of policy for The Ellesmere Port Church of England College. It provides guidelines for the standards of attendance, punctuality and display of the moral virtues expected in the College and for the procedures adopted by the College and its governors when pupils fall short of these expected standards. This policy attempts to ensure that all behaviour is consistent with the College's Mission Statement "To act justly, to love with mercy and to walk humbly with our God" Micah 6:8 and our Trust motto "Aspire not to have more but to be more".

We are dedicated to ensuring that our College environment supports learning and the wellbeing of pupils and staff through a strong sense of Christian community cohesion. Courage, justice, honesty, compassion, gratitude, humility, integrity and respect are the moral virtues within our Christian community, and we work hard to provide a safe College where pupils feel included in every aspect of College life and comfortable to voice their opinions.

This policy outlines what we expect from all our pupils in terms of their attendance and punctuality, and the sanctions that will be enforced if this policy is not adhered to. Good attendance and self-discipline are vital for pupils to carry with them both during and after their College years.

Regular and punctual school attendance is important. Pupils need to attend school regularly if they are to take full advantage of the educational opportunities available to them by law.

The Ellesmere Port Church of England College fully recognises its responsibilities to ensure pupils are in school and on time, therefore having access to learning for the maximum number of days and hours.

Our Policy applies to all children registered at this school and this Policy is made available on our school website to all parents/carers of pupils who are registered at our school.

This Policy has been written to adhere to the relevant Children Acts, Education Acts, Regulations and Guidance from the Department for Education in addition to guidance from Cheshire West and Chester.

Although parents/carers have the legal responsibility for ensuring their child's good attendance, the Executive Headteacher/Head of School and Governors at our school are committed to working closely with parents, other professionals and agencies to ensure that all pupils are encouraged and supported to develop good attendance habits.

Legislation and Guidance

The 1996 Education Act (section 444) states that parents (including non-related adult carers in the child's household) have a legal responsibility to ensure that those of compulsory school age are educated, either by 'regular' attendance at school or 'otherwise'. The 2008 Education and Skills Act (section 155) specify the same requirement regarding regular attendance at alternative provision.

Regular and punctual attendance of pupils at school is both a legal requirement and essential for pupils to maximise their educational opportunities. Regular attendance has been defined by the Supreme Court (6th April 2017) to mean "in accordance with the rules prescribed by the school".

- Section 7 of the Education Act 1996 states that "The parent of every child of compulsory school age shall cause him/her to receive efficient full-time education either by regular attendance at school or otherwise".
- Section 444 (1) of the Education Act 1996 states that "if a child of compulsory school age who is a registered pupil at a school fails to attend regularly at the school his parent is guilty of an offence".
- Section 576 Education Act 1996 - Meaning of "parent"

***Definition of parent: Section 576 of the Education Act 1996** - A parent in relation to any child or young person, includes any person:

- All natural parents, whether they are married or not.
- who is not a parent but who has parental responsibility for him/her; or
- who has care of him/her.
- This also includes all parents who are absent. Parental partners can be included (whether or not they are married or the natural parent of the child as they have 'care' of the child. If a pupil lives with a grandparent or older sibling as their main carer, they can also be included as they are the main care provider.
- It is also important to note that even though a parent may not live in the same home as the pupil, that parent is still responsible for ensuring the child attends school every day.

Cheshire West Code of Conduct for Fixed Penalty Notices set out the procedures for the issuing an FPN. Full information can be found at: <https://www.cheshirewestandchester.gov.uk/documents/education-and-learning/early-years-and-childcare/education-welfare-service/education-welfare-service/code-of-conduct-education/education/education-fixed-penalty-notice-unauthorised-leave-of-absence.pdf>

Schools must enter pupils on the admission register and attendance register from the beginning of the first day on which the school has agreed, or been notified, that the pupil will attend the school.

For most pupils the expected first day of attendance is the first day of the school year. Every amendment made to the admission register and the attendance register must include: the original entry; the amended entry; the reason for the amendment; the date on which the amendment was made; and the name and position of the person who made the amendment.

For further information on 'School attendance; Guidance for maintained schools, academies, independent schools and local authorities visit:

<https://www.gov.uk/government/publications/working-together-to-improve-school-attendance>

Principles of the Attendance and Punctuality Policy

The Governing Board of EPC places a high priority on achieving standards and believe strongly that excellent pupil attendance and punctuality are essential. They undertake this role by:

- Monitoring whole school attendance termly and take appropriate action should it affect standards.
- Nominate a named Governor for Attendance.

The government expects:

- Schools and local authorities to:
 - Promote good attendance and reduce absence, including persistent absence.
 - Ensure every pupil has access to full-time education to which they are entitled; and,
 - act early to address patterns of absence.
- Parents to perform their legal duty by ensuring their children of compulsory school age who are registered at school attend regularly.
- All pupils to be punctual to their lessons.

Regular attendance and good punctuality at school is expected. The reasons for this are obvious: pupils learn best and receive most from College when they are actually there. This issue is highlighted in the Home/School Agreement which all parents are asked to sign at the beginning of each year and also within other regular communications between home and school.

The school has a duty to safeguard all its pupils. If a child is absent, the parents/carers should inform the school on the **first day of absence** and each following day of absence, stating the reason. The senior leader responsible for the strategic approach to attendance in school is Miss P. Wright.

The school will contact home when a child is absent, and the parent/carer has not notified the school of the absence. If no contact can be achieved or the reason for absence is not accepted the absence will be unauthorised. The school Attendance and Welfare team may also support with home visits.

Any pupil whose absence falls below 97% should be noted by their Head of Learning and the pupil will be placed on the 'Attendance Strategy' which is a graduated intervention system.

This is to encourage improved attendance and put support systems in place with Education Welfare Service, Attendance Officer, Children's Services and School Nurse, to address persistent absence issues. Other outside agencies may also be involved in cases which show persistently poor attendance.

Having poor attendance can have an impact on pupil progress and result in underachievement.

Attendance during one school year	equals this number of days absent	which is approximately this many weeks absent	which means this number of lessons missed
95%	9 days	2 weeks	50 lessons
90%	19 days	4 weeks	100 lessons
85%	29 days	6 weeks	150 lessons
80%	38 days	8 weeks	200 lessons

Amendments to the 2006 regulations from the Department for Education (which came into effect from September 2013) remove references to family holidays and extended leave. "Executive Headteacher/Head of Schools may not grant any leave of absence during term time unless there are exceptional circumstances".

Please note 'exceptional circumstances' do NOT include a situation where parents choose to take pupils out of school to fit in with their work-related holiday dates. Please refer to the DfE "Amendments to school

attendance regulations” for further details. If parents believe that their circumstances meet the ‘exceptional’ criteria, they must put their request in writing to the Executive Headteacher/Head of School at least one month in advance of the date.

Parents who take pupils on an unauthorised holiday in term time will result in a Fixed Penalty Notice.

Daily Registers

Under the 2006 Education Regulations the school is legally required to register pupils twice daily. Registers are marked in the morning between 08:30 and 09:00 and in the afternoon at Academic Review. It is essential that all pupils are registered on both occasions. On each occasion they must record whether every pupil is:

- Present
- Attending an approved educational activity
- Absent
- Unable to attend due to exceptional circumstances.

The school should follow up any absences to:

- Ascertain the reason.
- Ensure the proper safeguarding action is taken.
- Identify whether the absence is approved or not; and,
- Identify the correct code to use before entering it on to the school’s electronic register, or management information system as a priority and returned to the school office in a timely manner. This is used to download data to the School Census.
- Consider early identification, assessment, intervention and support processes that may need to be implemented.

It is a legal requirement that a register is taken at the start of the day. Not only does the process allow us to monitor attendance but also to act as a pupil checklist in respect of health and safety issues – e.g. Fire Drill.

The register should be marked using the codes as advised by the Department for Education (DfE) ‘Working together to improve School Attendance Guidance’ (for maintained schools, academies, independent schools and local authorities) Working together to improve school attendance (applies from 19 August 2024) (publishing.service.gov.uk)

Each year a school calendar is sent out and is also on the website which clearly indicates the days when your child is expected to be in school.

Pupils should be on the school premises no later than 08:30 ready to go to their first lesson. The school gate will close at this time. Pupils who arrive after the school gate closes will have to enter the school through the main entrance where they will be met by a member of staff to register/or sign a late register at the reception desk. Pupils who arrive late to school will receive a late mark which will result in them receiving a same day after school detention for 30 minutes.

Parents will be alerted to this through School Synergy. Under rules set out by the Government ‘Schools don’t have to give parents notice of after-school detentions or tell them why a detention has been given’ available at: <https://www.gov.uk/school-discipline-exclusions>

Clubs at lunchtime

It is the responsibility of the leader of club during AR Time to ensure they mark the pupils with them as present. The form tutor should **NOT** mark the pupil in AR Time unless they are in front of them for the entire period of AR Time.

Registers must be taken every lesson and staff should inform SLT through Class Charts if a pupil who had been marked in previously that day has not shown up to their lesson.

Trips

Pupils going on trips should have their register taken by the trip leader. They should NOT be sent to get their mark from the classroom teacher. Trip leaders must also ensure that all pupils' names are given to the admin team on standard form lists before they leave.

Rehearsals/Music lessons

Rehearsals should always be marked in the rehearsal space/Theatre/drama studio – pupils should not be sent to class teachers to get their mark. The reason for this is simple – the pupil may get their mark and then truant. Safeguarding should always be our priority.

If a pupil is timetabled for a music lesson part way through your lesson, you should mark them in your lesson and allow them to go to it. It is the responsibility of the music department to check with HOL/Classroom teachers if the pupil does not attend at the allocated time and yet appears to be in school. Pupils should always have a pass or something similar in their planners.

Absence / Lateness

Regular attendance at school is the responsibility of parents and carers. Under the 1996 Education Act parents commit an **offence** if the child does not attend school regularly. ***If your child cannot come to school because of illness, you should advise the school on the first day of absence by telephone and every subsequent day they are absent.***

If no message is received, we will assume that your child is absent without your permission. We will then make every effort to contact you. The school requires where possible **two** emergency contact numbers. It is essential that the school is kept informed of changes of contact details such as phone numbers and addresses. Please inform us of any changes in writing through the pupil planner or letter to your child's Head of Learning. This information can also be updated using the data checking sheet on parents' evenings and review days. Parents are encouraged to ensure that their child brings in a note confirming the reasons for the absence when the child returns to school. Once contact (verbal and/or written) has been made with the parent the school will determine if the absence is to be authorised or unauthorised.

The school will only authorise a medical absence if the circumstances are unavoidable. The school has the right to request medical evidence if a parent rings the school to confirm the pupil is unwell. This may include: a medical appointment card with one appointment entered, slip with date, pupils name and surgery stamp, signed by GP Receptionist, letter from a professional, doctor's note, medication prescribed by a doctor, copy of prescription, print screen of medical notes, as well as letters concerning hospital appointments or any other relevant evidence. The Executive Headteacher/Head of School may not authorise medical absence without this evidence.

Parents are asked to make routine medical and dental appointments outside school hours wherever possible. Where such appointments in school time are unavoidable, parents should inform the school in advance so a decision can be made whether to authorise the absence or not. If an appointment is authorised the pupil should be in school before the appointment and return following the appointment.

The College has invested in the School Synergy system. Each morning parents/carers of any pupils absent

from College will receive an automated phone call/text message requesting them to provide a reason for the absence. There is a 'staged approach' with regards to phone calls; attendance officer and the Pastoral team also have an identified cohort – identified through Attendance AIM.

If parents are unable to return a call for whatever reason, a written explanation for the absence is necessary upon a pupil's return to College. There is a facility for parents to be able to leave a message stating their son/daughter's reason for absence. Parents are informed of this information through reminders on the College website.

If any absence, whether covered by a note or not, is considered as an unauthorised absence by the College, it can result in a Fixed Penalty Notice. Parents will also be informed by a HOL or the Attendance Officer of our concern.

If a pupil is absent for more than two days and there has been no communication from the family regarding the child's absence after an Attendance Officer home visit, then we may consider reporting our concerns for the safety of the child to Social Care. This should be managed by going through the appropriate safeguarding channels.

Where a pupil has truanted school or a lesson then a sanction will be issued to ensure the time missed is caught up. For persistent truancy a pupil may be placed in our Emmaus centre as a sanction or even excluded from the College.

Pupils arriving after 8.30am receive a late mark from their Learning Coach. A note should be brought in to explain the circumstances for arrival after these times. Persistent lateness to College can result in an FPN for lateness.

Failure to complete a register will result in an SLT callout and possible further disciplinary action.

Fire registers will be completed by the office staff when registers close.

Absence from College

Unauthorised absence is where a school is not satisfied with the reasons given for the absence. This is an offence by the parent. Where pupils' attendance drops below 97% a staged approach to attendance will be implemented in an attempt to improve the pupil's attendance and avoid a parent facing an FPN or prosecution.

The Ellesmere Port Church of England College will robustly monitor and analyse attendance data to promptly identify and address possible concerns and allow for early interventions to support the child/family's underlying needs. This will include;

- Daily and Weekly attendance code analysis
- Specific cohort and group monitoring
- Monitoring of lesson attendance across all subjects
- 'Welcome back' meeting for all pupils that have been absent– to check wellbeing and ensure there are no ongoing needs that will impact on attendance
- Attendance AIM meetings every Learning Programme

When a pupil's attendance falls below 97% and depending on the number of absences a parent will be sent a stage one letter. If there is no improvement in the pupil's attendance, parents are invited in for a stage two meeting with a member of the Pastoral team or Attendance Officer. Where parents fail to attend or there is still no improvement in the pupil's attendance the College will apply for a Fixed Penalty Notice (FPN).

The College will request penalty notices to address unauthorised absence. A minimum evidential requirement of ten (10) school sessions, lost to unauthorised absence by any pupil in the current term will be required to trigger the process.

The Local Authority may:

- Issue a formal written warning to the parent/carer of the possibility of a penalty notice being issued.
- In the same letter, set a period of 20 school days within which the pupil must have no unauthorised absence.
- Issue a penalty notice through the post at the end of the 20-day period if the required level of improvement has not been achieved.

Further information on the Cheshire West protocol for FPN can be found at:

<https://www.cheshirewestandchester.gov.uk/documents/education-and-learning/early-years-and-childcare/education-welfare-service/education-welfare-service/code-of-conduct-education/fixe-penalty-notice-unauthorised-leave-of-absence.pdf>

Medical Absence

Absence due to illness should be reported to the school by phone on the first day of absence and any subsequent days. EPC will contact parents during the first day if no satisfactory reason for absence has been received. The school will ask about the child's symptoms in order to record their absence accurately.

In the majority of cases, a parent's notification that their child is ill can be accepted without question or concern. Schools should not routinely request that parents provide medical evidence to support illness. Schools are advised not to request medical evidence unnecessarily as it places additional pressure on health professionals.

Only where the school has a genuine and reasonable doubt about the authenticity of the illness should medical evidence be requested to support the absence. In instances of long-term or repeated absences for the same reason, however, seeking medical evidence may be appropriate to assist in assessing whether the child requires additional support to help them to attend more regularly, and whether the illness is likely to prevent the child from attending for extended periods. If a parent proactively seeks out a note from a GP, it does not imply a need for absence unless this is explicit in their letter.

If a medical absence is likely to be ongoing or long term, then we will offer support in accordance with the school's policies and statutory guidance relating to Children with health needs.

<https://www.gov.uk/government/publications/supporting-pupils-at-school-with-medical-conditions--3>. As a school we need to plan how children can access Education and how and when the child will return to school. In accordance with the Equality Act 2010 the school must also demonstrate that reasonable adjustments are made to meet child's Educational Needs.

For children who have a medical condition and cannot attend school, the school will refer to the Cheshire West and Chester Council's Medical Needs Team. <https://www.cheshirewestandchester.gov.uk/documents/education-and-learning/medical-needs-service/medical-needs-policy-latest.pdf>

Their policy states that referrals must come directly from the child's school and must be supported by medical evidence from one of the following health professionals:

- consultant paediatrician or adolescent psychiatrist
- consultant child psychiatrist
- hospital consultant

Supporting evidence from a General Practitioner alone cannot be accepted.

As from 19th August 2024 schools must make a sickness return to the Local Authority and provide the full name and address of all pupils who have been recorded with the code I (Illness) and who the school has reasonable grounds to believe they will miss 15 days consecutively or cumulatively because of sickness. This is to help the school and Local Authority to agree any provisions needed to ensure continuity of education of pupils who cannot attend because of health needs, in line with the statutory guidance on Education for Children with health needs:

<https://www.gov.uk/government/publications/education-for-children-with-health-needs-who-cannot-attend-school>

Early Identification and Intervention: assess, plan, do and review

Every pupil has a right to a full-time education and The Ellesmere Port Church of England College sets high attendance expectations for all pupils. The Ellesmere Port Church of England College will consider the individual needs of pupils and their families who have specific barriers to attendance and will consider our obligations under the Equality Act 2010 and the UN Convention on the Rights of the Child.

For any child / child person who is absent from school it is essential to fully understand the reasons for this so that targeted, evidence-based interventions and support can be put into place. All staff have a part to play in promoting attendance. We recognise the importance of ensuring that key members of staff from across the school, including Form Tutors, attendance, pastoral and SEND staff work in collaboration to consider and identify the holistic needs of the child/young person and to overcome barriers to attendance. In accordance with the principles of early intervention, a graduated approach of assess, plan, do and review will be followed utilising a range of school- based resources, evidence-based interventions and seeking advice and support from external services at an appropriate stage, when needed. These strategies are discussed in Guidance And Support meetings.

Appropriate assessments will be important to help understand the underlying reasons that may be contributing to attendance difficulties. This may be an assessment that focuses on the individual child's needs such as an SDQ, SEND assessments and wellbeing assessments or may include the holistic needs of the family, such as a TAF assessment. Assessments will include the views of the child/young person as well as parents/carers, and identify strengths (what is working well) and needs (what is working less well).

Assessments undertaken may identify that a child/young person is experiencing underlying emotional based needs that are contributing to non-attendance. Cheshire West and Chester Council has developed guidance for schools - Emotionally Based School Non-attendance: Good practice guidance for schools (revised November 2021). This is a whole school framework with a graduated approach to support the early identification and intervention of children/young people who may struggle to cope in school/attend school.

Information from assessments will inform a SMART action plan with focussed targets developed in partnership with families, and other services as appropriate. For example, Early Help and Prevention and Social Care may have a part to play in the delivery of support and intervention to promote engagement and attendance. SMART plans should be personalised to effectively meet a child / young person's needs and improve attendance and wellbeing outcomes.

Regular reviews of support and attendance plans are essential to monitor the impact of interventions and to adjust these accordingly. If, despite targeted support and intervention, attendance and wellbeing concerns persist, we may seek further advice and support from external services including mental health services, specialist teaching and education services.

Absence Codes

Appendix 3 - Absence Codes: According to the DfE guidance the following codes are used on the register.

New Attendance Codes from 19th August 2024

Attending a place other than the school.

These codes are classified for statistical purposes as attending an approved educational activity.

Code K	Attending education provision arranged by the local authority
Code V	Attending an educational visit or trip
Code P	Participating in a sporting activity
Code W	Attending work experience
Code B	Attending any other approved educational activity
Code D	Dual registered at another school

Absent leave of absence - These codes are classified for statistical purposes as authorised absence.

Code C1	Leave of absence for the purpose of participating in a regulated performance or undertaking regulated employment abroad.
Code M	Leave of absence for the purpose of attending a medical or dental appointment

Code J1	Leave of absence for the purpose of attending an interview for employment or for admission to another educational institution
Code S	Leave of absence for the purpose of studying for a public examination
Code X	Non-compulsory school age pupil not required to attend school
Code C2	Leave of absence for a compulsory school age pupil subject to a part-time timetable
Code C	Leave of absence for exceptional circumstance

Absent - other authorised reasons - These codes are classified for statistical purposes as authorised absence.

Code T	Parent travelling for occupational purposes
Code R	Religious observance
Code I	Illness (not medical or dental appointment)
Code E	Suspended or permanently excluded and no alternative provision made

Absent - unable to attend school because of unavoidable cause. - These codes are classified for statistical purposes as not a possible attendance

Code Q	Unable to attend the school because of a lack of access arrangements
Code Y1	Unable to attend due to transport normally provided not being available
Code Y2	Unable to attend due to widespread disruption to travel
Code Y3	Unable to attend due to part of the school premises being closed
Code Y4	Unable to attend due to the whole school site being unexpectedly closed
Code Y5	Unable to attend as pupil is in criminal justice detention
Code Y6	Unable to attend in accordance with public health guidance or law
Code Y7	Unable to attend because of any other unavoidable cause

Absent - unauthorised absence - These codes are classified for statistical purposes as unauthorised absence.

Code G	Leave of absence not granted by the school
Code N	Reason for absence not yet established
Code O	Absent in other or unknown circumstances
Code U	Arrived in school after registration closed

School attendance, safeguarding and children missing education

A child going missing from education is a potential indicator of abuse or neglect. School staff will follow the school's procedures for dealing with children that go missing from education, particularly on repeat occasions, to help identify the risk of abuse and neglect, including sexual exploitation, serious crime and to help prevent the risks of their going missing in future (Keeping Children Safe in Education (updated September 2022) and Children Missing in Education Nov 2013, updated Sept 2016). concerns of this nature should also be passed to the College DSL.

Notifying the Local Authority

The College notify the Local Authority of any pupil who fails to attend school regularly after making reasonable enquiries or has been absent without the school's permission for a continuous period of 10 days or more. (Pupil Registration) (England) Regulations 2006 regulation 12.

The College must also notify the Local Authority of any pupil who is to be deleted from the admission register.

Our College will demonstrate that we have taken reasonable enquiries to ascertain the whereabouts of children that would be considered 'missing'.

Where a child leaves our school without a destination or another school is not identified we will follow Cheshire West Children Missing Education Procedures.

Reluctance to attend school

Sometimes a pupil may seem anxious about leaving home to go to school. They may tell you that they feel unwell or give another reason to not attend. You may notice that they are worried from things that they say e.g. that they are struggling in particular subjects or are experiencing social issues. If this is the case, please contact the school as soon as possible to speak to your child's Head of Learning.

Leave of absence in term time

As of 19th August 2024, the law ceases to include a leave of absence for a family holiday. A leave of absence should not be granted unless there are exceptional circumstances. Generally, a need or desire for a holiday or other absence for the purpose of leisure and recreation would not constitute an exceptional circumstance. Head Teachers are only empowered to approve a leave of absence when it is requested in advance by the parent or carer with whom the child resides and when circumstances of the requested leave are 'exceptional'.

The Executive Headteacher/Head of School and the Governing Board will determine what constitutes an exceptional circumstance on an individual basis. If parents/carers need to request Exceptional Leave of Absence, they must write a letter addressed to Mrs Green. It should be noted that if any application is declined and absence occurs of a consecutive 5 or more unauthorised days, then school may apply to the Local Authority for a Fixed Penalty Notice to be issued to each parent/carers.

The following will not be deemed to be exceptional circumstances:

- Family holiday
- Availability of less expensive holiday
- Availability of holiday accommodation
- Parent/carers' working commitments

- Holiday pre-booked by another family member

A child's absence during term time seriously disrupts their continuity of learning. Not only do they miss the teaching on the days they are away but are less prepared for the lessons building on that teaching when they return to school. There is a consequent risk of under achievement, which we must seek to avoid.

The Governing Board is responsible for ensuring any attendance issues are dealt with in line with school policy.

Persistent Absence

The school has a responsibility to reduce the number of pupils whose attendance is below 90% over the school year. **Pupils with attendance below 90% fall into the 'Persistent Absentee' category.**

According to the DFE guidance 'If a child of compulsory school age fails to attend regularly at a school at which they are registered or at a place where alternative provision is provided for them the parents may be guilty of an offence and can be prosecuted by the Local Authority'. In addition, Local Authorities have the power to prosecute parents who fail to comply with a school attendance order (section 443 of the Education Act 1996) or fail to ensure their child's regular attendance at a school (section 444 of the Education Act 1996).

In order to avoid a pupil falling into this category a staged approach will be used where possible to ensure that attendance below 97% improves. This includes letters to parents, staged meetings and action plans to ensure that attendance improves. These meetings will also help to identify any concerns which may be causing the pupil to be absent and allow staff and parents to identify strategies to improve this.

When a pupil's attendance falls below 90% at any stage of the year a staged meeting will be held with College pastoral / Attendance staff. In addition, pupils will be monitored by the Form Tutor, Head of Learning, Learning Coach and SLT who will track their attendance on a weekly basis. Staff will contact parents to discuss the attendance concerns and formalise an **Action Plan** to secure an improvement in attendance.

This will include improvement targets with set timescales and an overview of the support provided by the school to support the child and their family. Parental failure to comply with the contract may be used as evidence if the Local Authority decides to issue an FPN or prosecute parents.

Where an attendance meeting is called, the reasons for absence will be identified and different strategies to improve attendance will be considered.

- A supportive action plan will be agreed.
- An attendance target date for improvement will be set.
- The pupil's attendance will then be closely monitored for a period of no more than 4 school weeks.

If the parent fails to attend this meeting without reasonable justification this could result in an FPN being issued to parents/carers or court proceedings under the 'Single Justice' process. Under section 444, an FPN will be **issued for £80 to both parents**. Each parent will have 21 days to make payment. This will rise to £160 if the initial fine is paid between 22 and 28 days. The payment must be made directly to the Local Authority. Failure to pay the Penalty Charge Notice Fine will result in further legal action being taken by the courts, with the maximum fine currently £2,500 or three months in prison.

What happens next?

Whilst the intention of the School Attendance meeting is that attendance will improve, if the attendance

deteriorates by the target review date the Local Authority may recommend legal action is taken. This could include prosecution in the Magistrates' Court, Education Supervision Orders or Parenting Orders.

Unauthorised Absence and Fixed Penalty Notice

An absence may be coded as 'unauthorised' if:

- no reason for absence has been given.
- medical evidence is not received when requested.
- a request for a leave of absence has been unauthorised.
- a pupil arrives at school after registration has closed.

Parents/carers should be aware that The Ellesmere Port Church of England College may contact the Local Authority if a pupil has 10 or more unauthorised absences in a 10-week period with a view to issuing a Fixed Penalty Notice or other legal action. The Fixed Penalty Notice is issued individually to each parent/carer who fails to ensure their child's regular attendance at school. The Penalty is £80 per parent/carer per child if paid within 21 days rising to £160 if paid within 28 days. Non-payment of the Fixed Penalty Notice may result in prosecution in the Magistrates court.

Application for Exceptional Circumstances

In September 2013, amendments to the Education (Pupil Registration) (England) Regulations 2006, make it clear that Head Teachers may not grant any Leave of Absence (holiday) during term time unless there are '**exceptional circumstances**'.

The Executive Headteacher/Head of School and the Governing Board will determine what constitutes an exceptional circumstance on an individual basis. If parents/carers need to request Exceptional Leave of Absence, they must complete an 'Exceptional Leave of Absence' form available from the school office. It should be noted that if any application is declined and absence occurs of a consecutive 5 or more unauthorised days, then school may apply to the Local Authority for a Fixed Penalty Notice to be issued to each parent/carer.

The following will not be deemed to be exceptional circumstances:

- Family holiday
- Availability of less expensive holiday
- Availability of holiday accommodation
- Parent/carer's working commitments
- Holiday pre-booked by another family member

A child's absence during term time seriously disrupts their continuity of learning. Not only do they miss the teaching on the days they are away, but they are less prepared for the lessons building on that teaching when they return to school. There is a consequent risk of under achievement, which we must seek to avoid.

The Governing Board is responsible for ensuring any attendance issues are dealt with in line with school policy.

Religious Observance

We recognise that some pupils may need to participate in days of religious observance. Where a day of religious observance falls during school time and has been exclusively set apart for religious observance by the religious body to which the pupil belongs, we ask that parents/carers notify The Ellesmere Port Church of England College in writing in advance where absence is required due to a religious observance.

Enforced School Closure

If the Ellesmere Port Church of England College was forced to close for a period of time, we have the facility to operate an online virtual school. The expectation is children will still engage with ALL activities

when work is set on Microsoft Teams. Procedures for online learning will be sent to parents as and when required.

Impact

All pupils will achieve well by developing knowledge and skills on their journey through school. Due to robust monitoring of attendance, all pupils, including vulnerable children and children with special educational needs and disabilities (SEND), will have fair and equitable access to school in order to achieve the best possible outcomes. Pupils will leave The Ellesmere Port Church of England College ready for a successful transition to their next steps in education or employment.

Issuing Penalty Charge Notices: Each parent receives a penalty charge notice for each child who has unauthorised absence. The penalty is £60 or £120 depending on how soon payment is made. Failure to pay the penalty notices may result in prosecution.

Taking parents to court for unauthorised absence: Education Act 1996 Section 444 - court can fine each parent up to £1000 per child, order payment of prosecution costs and/or impose a Parenting Order.

Punctuality

As you may be aware, the law treats some persistent lateness in the same way as irregular attendance and parents may be prosecuted by the Local Authority if late arrival is not resolved. Poor punctuality can lead to your child:

- Feeling embarrassed in front of their friends
- Missing the beginning of vital lessons
- Missing important instructions for the rest of the school day
- Learning bad habits which could affect their employability in the future.

Minutes late per day during the school Day	Equal days' worth of teaching lost in a Year
5 minutes	3.4 days
10 minutes	6.9 days
15 minutes	10.3 days
20 minutes	13.8 days
30 minutes	20.7 days

Late Procedures

Pupils who arrive after the school gate closes will have to enter the school through the main entrance where they will be met by a member of staff and will be taken to lesson. Pupils who arrive late to school will receive a late mark which will result in them receiving a same day after school detention for 30 minutes. Parents will be alerted to this through School Synergy. Under rules set out by the Government 'Schools don't have to give parents notice of after-school detentions or tell them why the detention has been given' available at: <https://www.gov.uk/school-discipline-exclusions>

Children who have to leave for any reason throughout the day should be signed out at the main office by their parent/carer or appropriate adult. This is strongly discouraged. Parents are requested to make dental or medical appointments.

Roles and responsibilities

IMPROVING ATTENDANCE – WHAT PARENTS CAN DO:

- Provide where possible two emergency contacts to the school.
- Notify the school on the first day of absence.
- Try to make all medical appointments (doctors, dentist and hospital) out of school time. Obviously, this is not always possible but, in such cases, try to minimise the disruption to the day by getting an early morning appointment so that your child can attend afterwards OR a late afternoon appointment so that she can complete most of her timetable before leaving.
- A child should attend school before and after their appointment.
- Encourage your child to take responsibility for being on time for school ensuring they have a realistic bedtime and will not be too tired to get up in the morning for school. Equipment should be prepared the night before. Regularly checking your child's planner can help you to do this.
- Discourage your child from staying overnight with friends during the week. This sometimes leads to them both being late (or not attending at all) the next day.
- Leave of absence during term time is not a parental right. If there are special or exceptional circumstances, please contact the Executive Headteacher/Head of School who will decide whether the absence is authorised.
- Talk positively about going to school.
- Monitor your child's Internet and social media use to ensure they are not experiencing any difficulties that may prevent them from wanting to attend school.
- Take any worries seriously but do not show that you are unduly concerned. Believe that they will be sorted out. Contact school before the concerns escalate.

IMPROVING ATTENDANCE – WHAT SCHOOL DOES:

- Mark the registers twice a day.
- Informs any parents / carers who have not contacted the school of the absence of their child on a particular day.
- Maintains records and monitors attendance of pupils on a regular basis.
- Authorises absences in accordance with the Government guidelines. Please note that only the school can authorise absence.
- Contacts parents / carers when the attendance falls below acceptable levels and / or when particular patterns of absence are causing concerns.
- Undertake an Early Help Assessment where it is deemed appropriate.
- Monitor pupils who are supported by the In Year Fair Access Panel and those who attend alternative provision.
- Works with external agencies to maintain good attendance and to support the pupil / family with any issues that may affect attendance and punctuality to school.
- Provides reintegration support for pupils returning from absence.
- Maintains a range of strategies to encourage good attendance by means of rewards.
- Inform parents of individual pupils' attendance record each term at Parents' Evening.
- Works with relevant external agencies if a pupils' attendance becomes a concern, i.e. – Social Care, Early Help Services, Police, YOT, SEND.
- Make referrals to the School Nurse team where appropriate to seek advice to support the pupil.
- Works in partnership with the Local Authority to improve school attendance and reduce persistent absenteeism sometimes utilising legal interventions.
- Hold stage meetings to support and improve attendance.

Communication with parents

The College uses a Synergy to inform parents of absence where there has been no reason provided. To report an absence, parents should contact the school 0151 350 6000 and select option 2. Please ensure you leave the pupils name, year, DOB and reason for the absence. Further phone communication through phone calls, School Synergy messages and parental meetings will also be used to address attendance concerns.

Rewards and incentives

Positive attendance will be celebrated at both Form Tutor and Head of Learning on a regular basis. Pupils with good attendance will also be celebrated at weekly assemblies and at the College celebration assemblies.

Attendance Additional Intervention Meeting (AIM)

Attendance AIM meetings take place as scheduled every Learning Programme as per the College calendar. AIM meetings may be called as needed to address concerns identified in particular year groups. These meetings will be chaired by the Vice Principal and attended by the Head of Learning, Learning Coach and Attendance Officer. In these meetings action plans will be agreed and cohorts and strategies identified to improve pupil attendance.

Appendix 1 – Sample stage 1 letter

[Date]

[Addressee]
[Address]

Dear [Salutation]

[Pupil Name] - [Form]
Re: Attendance

Our records show that [Pupil Forename]'s attendance is [attendance figure]%. This is below the national expected minimum of 97% and is therefore a cause for concern. Good attendance is key to ensuring that pupils progress well at school. In addition, your child's attendance record has to be conveyed in any future reference provided by the school.

We are hopeful that your child's attendance will improve. However, if this is not the case, you will be invited to come into school to discuss the matter.

Please do not hesitate to contact me at any time.

Yours sincerely

Head of Learning Year X

Appendix 2 – Sample stage 2 letter

Date

[Addressee]
[Address]

Dear [Salutation]

[Pupil Name] - [Form]

Re: Invitation to Stage 2 Attendance Action Plan meeting

Records show that [Pupil Forename]'s attendance is [attendance figure]%. This is well below the minimum national expectation of 97%. Good attendance is key to ensuring that pupils progress well at school. In addition, your child's attendance record has to be conveyed in any future reference provided by the school.

As [Pupil Forename]'s attendance is a cause for concern, I would like to invite you to come into school on [Day], [Date] at [Time] when we will discuss the matter and form an Action Plan.

Please note that parents who refuse to cooperate with School Attendance Panels may be referred to the Education Social Welfare Service who may issue a Fixed Penalty Notice of £80 if paid within 21 days or £160 if paid within 28 days. Parents who do not pay the Fixed Penalty Notice may be prosecuted under Education Act 1996, Section 444 or the Local Authority may also apply for an Education Supervision Order.

I look forward to seeing you at this meeting. If this is inconvenient, please contact me as soon as possible to rearrange a more suitable time.

Yours sincerely

Head of Learning Year X

Appendix 3 – Sample Attendance Action Plan letter

Date

Addressee

Address

Dear <Salutation>

[Pupil Name] - [Form]

I am writing to you regarding the recent meeting which we had concerning <insert pupil name> attendance at The Ellesmere Port Church of England College.

I have enclosed a copy of the Action Plan for your information and attention.

May I take this opportunity to inform you that: under Section 444 of the Education Act 1996, you have a legal responsibility to ensure that <insert pupil name> attends The Ellesmere Port Church of England College regularly. Failure to do so may lead in legal action being taken against you by the Local Authority resulting in prosecution.

Thank you for attending the recent meeting; it is only by all working together that we can achieve the best possible educational and social outcomes for our pupils.

Yours sincerely,

Head of Learning Year X

Appendix 4 – Sample Medical Evidence letter

Date

[Addressee]

[Address]

Dear [Salutation]

**Re: Medical Evidence
[Pupil Name] - [Form]**

The Ellesmere Port Church of England College places great emphasis upon every student achieving their full potential. It is important therefore that every student attends the school regularly and participates in the schooling that is offered if they are to make good progress and benefit from the opportunities that school offers.

It is expected that parents/carers support their child by complying with the law which imposes a duty on parents/carers to ensure that their son/daughters are properly educated.

I am aware that there have been reasons provided for these absences **however to enable us to authorise any future absences due to illness medical evidence will be required.**

This can be in the form of:

- Copy of prescription relating to the illness
- A dated note from the GP's receptionist confirming your visit to the GP
- A medical appointment card
- Evidence of medical prescribed by the GP

May I remind you that after 10 sessions (5 days) of unauthorised absence you may receive a fixed penalty notice warning.

If there is anything that you feel the school should be aware of, or that I can help you with, I would be grateful if you could telephone me at school to discuss this further.

Yours sincerely,

Head of Learning Year X

Appendix 5 – Sample stage 3 letter

Date

Addressee

Address

Dear [Salutation]

[Pupil Name] - [Form]

FINAL WARNING – STAGE 3

[Forename]'s attendance at The Ellesmere Port Church of England College is currently [percentage]%. This is below the 97% minimum EPC attendance target which we expect every pupil to register within the academic year. Obviously such a record is not acceptable and I now have to warn you that unless there is immediate improvement in «forename»'s attendance, the Local Authority will have no option but to instigate one of the following options:

(a) Initiating legal proceedings in the Magistrates Court under S.444(1) Education Act 1996.

If convicted under this section, you may be fined up to £1000.

(b) Initiating legal proceedings in the Magistrates Court under S444(1A) Education Act 1996.

If convicted of this offence you may be fined up to £2,500 or be sent to prison for up to 3 months.

You are therefore invited to attend a meeting to on [Day] [Date] at [Time].

Yours sincerely

Attendance Officer

Appendix 6 – Sample Final Warning letter

Date

Addressee

Address

Dear [Salutation]

[Pupil Name] - [Form]

We have previously wrote to you concerning <insert pupil name> irregular attendance at The Ellesmere Port Church of England College.

Unfortunately, I now have to contact you again as <insert pupil name> has continued to be absent from school.

Obviously, such a record is not acceptable, and I now have to warn you that unless there is an immediate improvement in <insert pupil name> school attendance, the Local Authority will have no option but to instigate one of the following options:

- a) **Initiating legal proceedings in the Magistrates Court under S.444(1) Education Act 1996. If convicted under this section, you may be fined up to £1000.**
- b) **Initiating legal proceedings in the Magistrates Court under S.444(1A) Education Act 1996. If convicted of this offence you may be fined up to £2,500 or be sent to prison for up to 3 months or both.**

Please contact me to discuss.

Yours sincerely,

**Miss S Fties
Attendance Officer**

Appendix 7 – Sample flyer to parents

Attendance

Regular attendance is an important part of school life.

Good attendance shows potential employers that you are reliable.

Do we ever really consider the impact of having a day off school? The chart below shows the number of days and lessons 'lost learning' for pupils with different percentage attendances. The chart is based on a school with a 190 day year and shows a five period day.

You can help by:

- making sure that your attendance and punctuality are as good as possible
- not missing school for minor things, think about whether you would expect to miss a day at work for the illness
- Making sure appointments for dentist etc are made outside school hours

Attendance	95%	90%	85%	80%
Number of days lost learning	9.5	19	28.5	38
Number of lessons lost learning (for a five period day)	47.5	95	142.5	190

Is 95% attendance good? This means that you have still missed nearly 10 school days in one year. Over five years that would be nearly 50 days, this is almost a school term.

Appendix 8 – Sample Stage Action Plan



Attendance Stage _ Targets

Student Name Attendance	Tutor Group	Date of birth	Current
----------------------------	-------------	---------------	---------

Date	Discussion between
------	--------------------

Issues discussed/Parents perceived barriers to attendance

For info:

The Government attendance target is 96%. When a student falls below 90%, they fall into the Government’s Persistent Absentee (PA) category. Additionally, medical evidence will be requested for future absence.

Aim – To increase school attendance

Action required by Pupil:

- 1.
- 2.
- 3.

Action required by Parents:

- 1.
- 2.
- 3.

Action required by School:

- 1.
- 2.
- 3.

Agreed by:

Pupil:

Parent:

College:

Appendix 9 – School FPN warning letter

Date

Addressee Address

Dear [Salutation]

[Pupil Name] - [Form]

During our last school attendance review we noted that [Pupil Name] attendance and punctuality has continued to be a cause for concern.

This school year he has been absent for 18 sessions, 8 of which have been authorised and 10 unauthorised. You have a legal responsibility as the parent to ensure that Lillie-Mai attends school regularly and punctually.

Due to the unauthorised absences, the school will now request a Fixed Penalty Notice Warning Letter from the Local Authority. The current penalties payable by parents are £80 when the penalty is paid within 21 days and £160 when the penalty is paid within 28 days. This penalty is per parent/carer per child.

If the fixed penalty is not paid this could lead to you being prosecuted in the Magistrates' Court.

If you feel this decision has not taken into account any relevant exceptional circumstances, please contact the school immediately for further discussion.

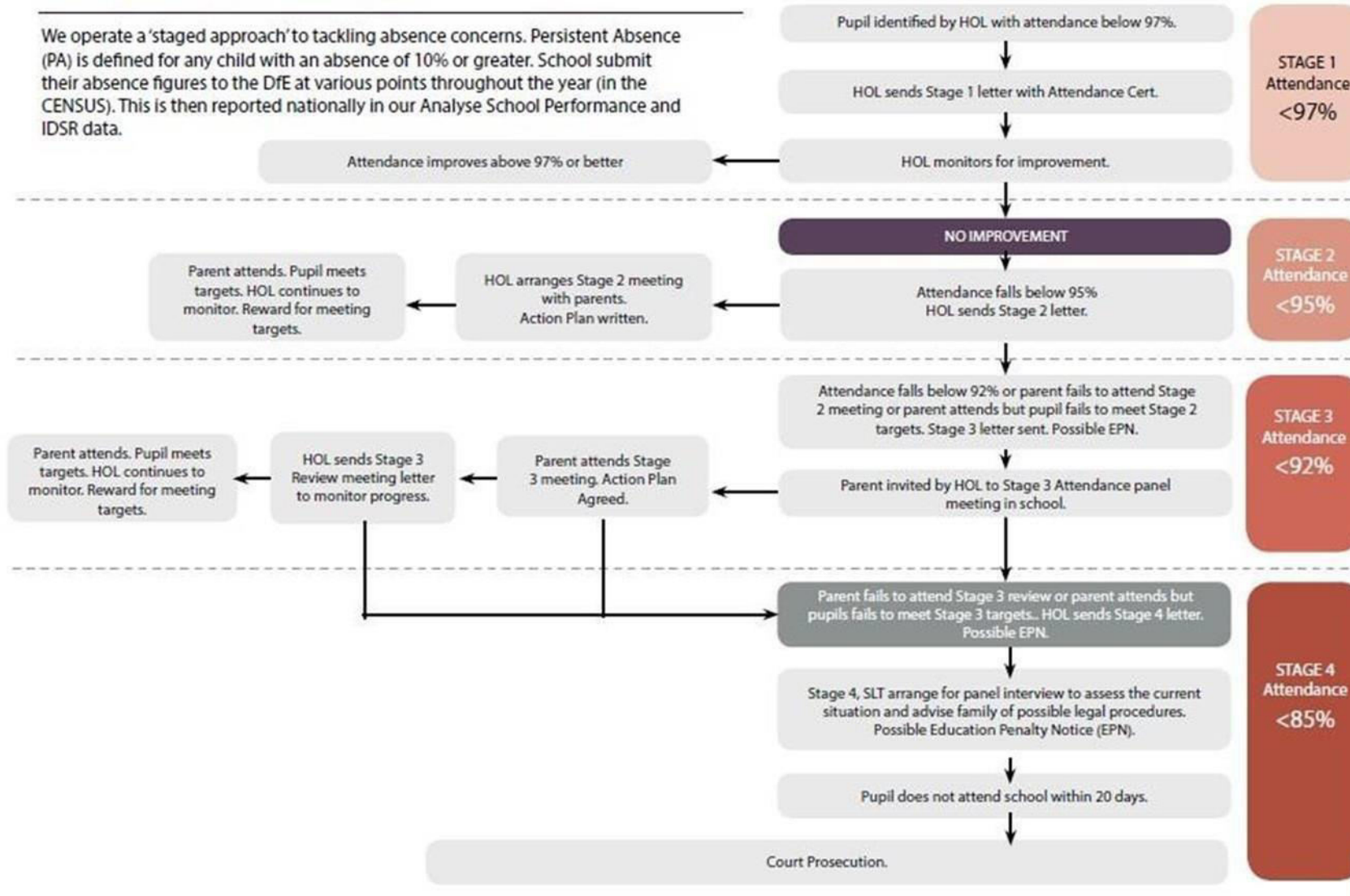
Yours sincerely

Miss S Fties
Attendance Officer

Appendix 10 – Staged Approach

Persistent Absence

We operate a 'staged approach' to tackling absence concerns. Persistent Absence (PA) is defined for any child with an absence of 10% or greater. School submit their absence figures to the DfE at various points throughout the year (in the CENSUS). This is then reported nationally in our Analyse School Performance and IDSR data.



Appendix 11 – Code of Conduct for Education Fixed Penalty Notice (Unauthorised Leave of Absence & Irregular Attendance)

Cheshire West & Chester

Code of Conduct for Education Fixed Penalty Notice (Unauthorised Leave of Absence & Irregular Attendance)

1. A Fixed Penalty Notice (FPN) can only be issued in cases of unauthorised absence.
2. A maximum of two FPNs may be issued in an academic year and these FPNs may be issued against each parent/carer of a child. Once two FPNs have been issued, should there be further unauthorised absences, the Local Authority are able to move to prosecution immediately.
3. A FPN may be issued per parent per child.
4. Penalty Notices may be considered appropriate if:
 - Unauthorised absences of at least 10 consecutive school sessions (five school days).
 - Sessions either side of a weekend or school holiday will be counted as consecutive school days.
 - For poorly attending learners, at least 10 sessions (five school days) lost due to unauthorised absence during a school term. These do not need to be consecutive.
 - For poorly attending learners, persistent late arrive at school in a term. Persistent means at least 10 sessions of late arrival.
 - The presence of an excluded child in a public place in the child's first five days of exclusion.
6. The school must notify parents of the Attendance Policy and clearly state that parents may receive an FPN for an unauthorised leave of absence relating to holiday in term time.
7. Schools and the Education Welfare Services will take into account any exceptional circumstances when determining whether to issue a FPN.

Appendix 12 – Local Authority Guidance for schools – Attendance case working. (School only)

These stages should be followed once a pupil has reached 10 sessions of unauthorised absence and the school is considering the Education Welfare Service's involvement as current strategies are not improving attendance.

Stage 1 (within 30 days)

- Ensure usual attendance policy procedures are being followed
- Continue normal first day contact etc.
- Conduct investigative safeguarding home visits.
- Gather information from teaching and support staff regarding the pupil's strengths and needs – this may include a round robin
- Meet with pupil to elicit their views about school (eg. what is working well / working less well)
- Develop a shared action plan in collaboration with parents / carers, pupils and key staff (informed by assessments and to address specific factors underlying non-attendance)
- Continue to follow assess, plan, do and review cycles focussed on targeted intervention and support – e.g. Support and Attendance Plan
- Make an initial single assessment (simplified TAF assessment)
- Refer to other agencies as appropriate (e.g. iART)

If parent/carer does not engage with support offered

- Arrange an Attendance Panel Meeting to discuss barriers to attendance, record the voice of the child and complete and ESO checklist
- Consider an irregular attendance FPN (10-26 sessions unauthorised)
- Consider a first warning letter for prosecution for more entrenched cases (26+ sessions)

Stage 2 (within 60 days)

- Continue with usual contact in line with attendance policy
- Conduct further home visits
- Discuss case with attendance lead in school
- Consider Attendance Planning Meeting if there is no improvement following the prosecution first warning letter
- Issue a final warning letter if no improvement following the Attendance Planning Meeting
- Consult with Education Welfare Officer to support in preparing witness statement and exhibits of evidence

Stage 3 (within 90 days)

- EWO will support in setting up Court File as follows:
- Statement of evidence S9
- Exhibits (labelled and numbered)
- Head teacher certificate
- Recent registration certificate

Links to other school policies

This Policy will be read in conjunction with other policies regarding the safety and welfare of children.

These together make up the suite of policies to safeguard and promote the welfare of children in this school.

The policies listed below are all available on the website:

- [Child Protection and Safeguarding Policy](#)
- [Staff Conduct Policy](#)
- [Anti-Bullying policy](#)
- [Behaviour policy](#)
- [Sexual Violence and Sexual Harassment in Schools policy](#)
- [Equality and Diversity Policy](#)
- [ICT Acceptable Use Policy](#)
- [Whistleblowing Policy](#)
- [Managing allegations against staff Policy](#)
- [E-Safety Policy](#)
- [First Aid Policy](#)
- [Attendance and Punctuality Policy](#)
- [Relationships and Sex Education](#)
- [Safer Recruitment](#)